

JACK-UP



1. spudlegs \varnothing 1200 mm
2. modular pontoons
3. double bollards
4. safety railing
5. anchor winches
6. emergency ladder
7. embarkation ladder
8. Pushboat Tiger
9. Modular crane pontoon

Modular Jack-up 18x12

request for quotation >

Activities geotechnical survey/ soil investigation, sheetpile anchor drilling, drilling (blasting) activities, service platform

Main Specifications

Length	18.29 m
Breadth	12.19 m
Depth	1.83 m
Payload capacity	100 ton
Spud legs Ø 762 mm, 12 - 24 - 30m	4 pcs

Service

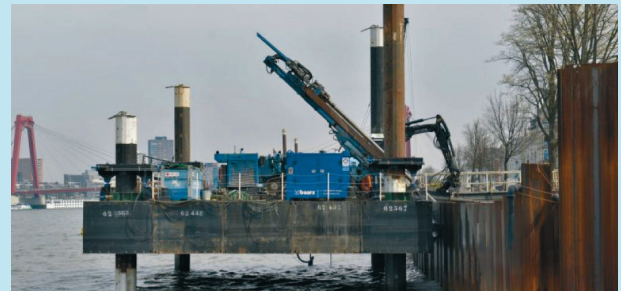
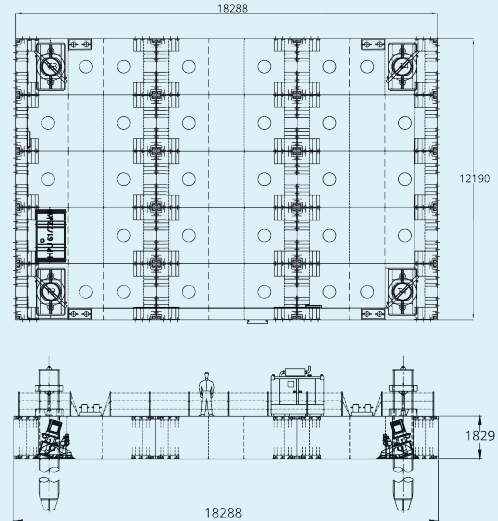
Engineering	project specific requirements
Transport	by truck, containervessel, towing
Assembly	on project location or shipyard Baars
Operational	assistance on project location

Classification

Hull Certification	inland and seagoing
Operating area	river, port, lake, coastal area and sea

Options

- ✓ Moonpool
- ✓ Mooring system
- ✓ Dragline mats/fenders
- ✓ Accomodation, control unit & storage container(s) & fuel tank
- ✓ Working lights, life saving equipment & railing
- ✓ Waste/water/fuel tank(s)
- ✓ Generator, **solar panels, hydraulic bio-oil**



Modular Jack-up 21x12

request for quotation >

Activities geotechnical survey/ soil investigation, sheetpile anchor drilling, drilling (blasting) activities, service platform

Main Specifications

Length	20,73 m
Breadth	12,19 m
Depth	1,83 m
Payload capacity	100 ton
Spud legs Ø 762 mm, 12 - 24 - 30m	4 pcs

Service

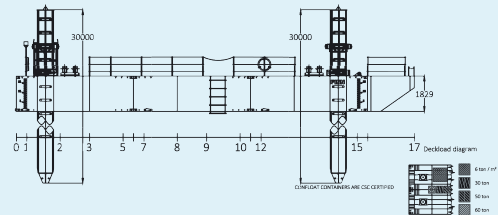
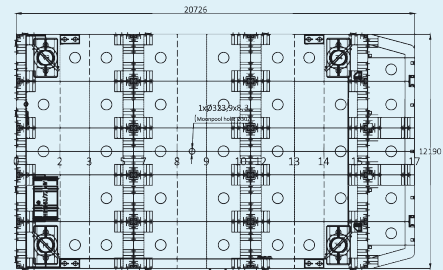
Engineering	project specific requirements
Transport	by truck, containervessel, towing
Assembly	on project location or shipyard Baars
Operational	assistance on project location

Classification

Hull Certification	inland and seagoing
Operating area	river, port, lake, coastal area and sea

Options

- ✓ Moonpool
- ✓ Mooring system
- ✓ Dragline mats/fenders
- ✓ Accomodation, control unit & storage container(s) & fuel tank
- ✓ Working lights, life saving equipment & railing
- ✓ Waste/water/fuel tank(s)
- ✓ Generator, **solar panels, hydraulic bio-oil**



Modular Jack-up 24x12

request for quotation >

Activities geotechnical survey/ soil investigation, sheetpile anchor drilling, drilling (blasting) activities, service platform

Main Specifications

Length	24.38 m
Breadth	12.19 m
Depth	1.83 m
Payload capacity	100 ton
Spud legs Ø 762 mm, 12 - 24 - 30m	4 pcs

Service

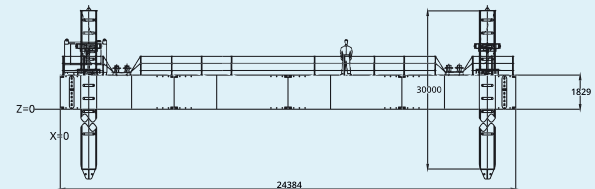
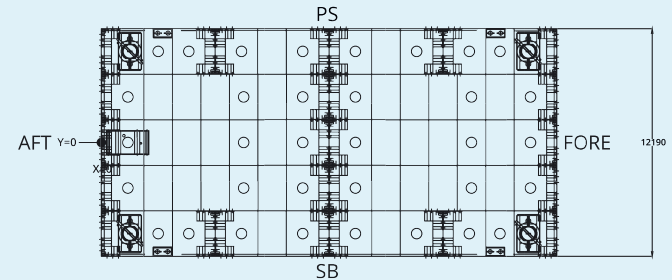
Engineering	project specific requirements
Transport	by truck, containervessel, towing
Assembly	on project location or shipyard Baars
Operational	assistance on project location

Classification

Hull Certification	inland and seagoing
Operating area	river, port, lake, coastal area and sea

Options

- ✓ Moonpool
- ✓ Mooring system
- ✓ Dragline mats/fenders
- ✓ Accomodation, control unit & storage container(s) & fuel tank
- ✓ Working lights, life saving equipment & railing
- ✓ Waste/water/fuel tank(s)
- ✓ Generator, **solar panels, hydraulic bio-oil**



Barrow modular Jack-up 22x17

request for quotation 

Activities geotechnical survey/ soil investigation, sheetpile anchor drilling, drilling (blasting) activities, service platform

Main Specifications

Length	21.94 m
Breadth	17.07 m
Depth	2.44 m
Weight	400 ton
Deck load per m ²	20 ton
Max payload	250 ton
Crawler Crane	200 ton max

Technical specifications spud legs

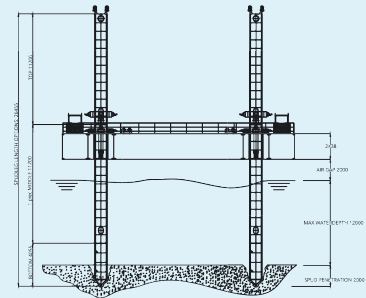
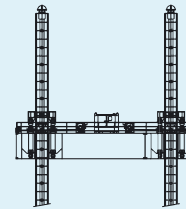
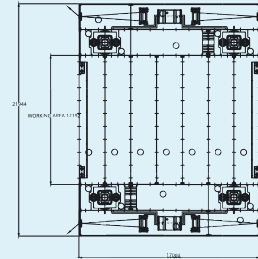
Length	26.40 m - 4pc
Breadth (length and width)	1.200 mm

Service

Engineering	project specific requirements
Transport	by truck, containervessel, towing
Assembly	on project location or shipyard Baars
Operational	assistance on project location

Classification

Hull Certification	inland and seagoing
Operating area	river, port, lake, coastal area and sea



Jack-up applications



bridge repair



port construction



sheet pile installation



bridge construction



service platform



geotechnical drill



pipelines support