

Main Specifications

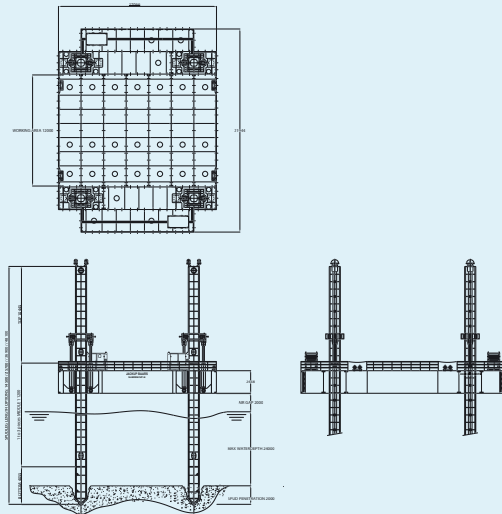
| | |
|------------------|-------------------------|
| Length | 21.94 m |
| Breadth | 17.07 m |
| Depth | 2.44 m |
| Draught unloaded | 1.16 m |
| Draught loaded | 1.89 m |
| Weight | 400 tonnes |
| Deck load | 5 tonnes/m ² |
| Max payload | 250 tonnes |
| Jacking speed | 10 meter / hour |
| Jacking stroke | 1.60 meter |
| Crawler Crane | 150 tonnes max |

Technical specifications spud legs

| | |
|------------------|-----------|
| Number | 4 |
| Length | 26.40 m |
| Breadth (length) | 1.200 mm |
| Breadth (width) | 1.200 mm |
| Weight | 41 tonnes |

Classification

| | |
|----------------|---|
| Class society | RINA |
| Class notation | I ✘ Hull ● unmanned Self-elevating unit Special service construction unit Coastal area 5 NM from shore HS < 2.50 m |



Main Specifications

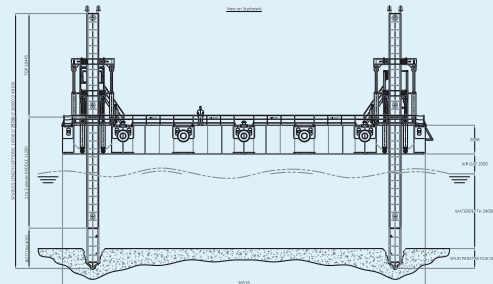
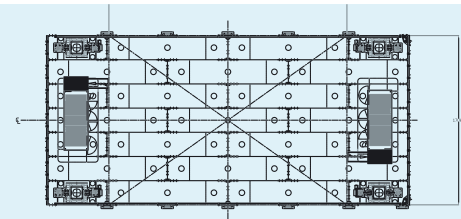
| | |
|------------------|--------------------------|
| Length | 36.58 m |
| Breadth | 17.07 m |
| Depth | 2.90 m |
| Draught unloaded | 0.70 m |
| Draught loaded | 2.08 m |
| Weight | 560 tonnes |
| Deck load | 12 tonnes/m ² |
| Max payload | 400 tonnes |
| Jacking speed | 36 meter / hour |
| Jacking stroke | 1.60 meter |

Technical specifications spud legs

| | |
|-------------------|-------------|
| Number | 4 |
| Length | 36.00 m |
| Length (optional) | 48.00 m |
| Breadth (length) | 1.200 mm |
| Breadth (width) | 1.200 mm |
| Weight | 70.8 tonnes |

Classification

| | |
|----------------|--|
| Class society | DNV-GL or Bureau Veritas |
| Class notation | I ✕ Hull ● Machinery |
| | Offshore self-elevating unit |
| | Special service construction unit |
| | Coastal area 20 miles from shore HS < 2.50 m |

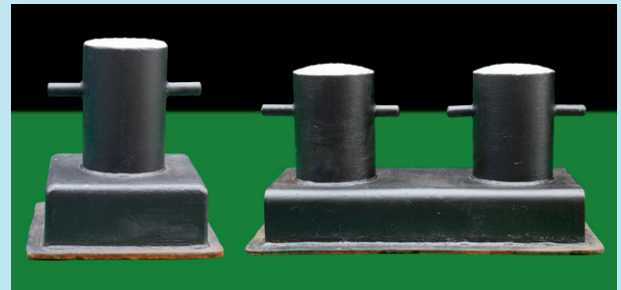
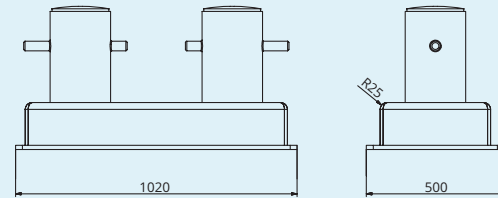
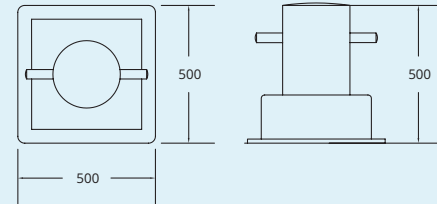


Technical information Single bollard

| | |
|--------------|--------|
| Length | 500 mm |
| Breadth | 500 mm |
| Depth | 500 mm |
| Total weight | 80 kg |

Technical information Double bollard

| | |
|--------------|----------|
| Length | 1.020 mm |
| Breadth | 500 mm |
| Depth | 500 mm |
| Total weight | 160 kg |





Fender



Toolbox containers



Hydraulic hoses



Remote control