

Nore 6 drill work platform jack-up

Main Specifications

Length	18,29 m
Breadth	12,19 m
Depth	1,83 m
Max payload	100 tonnes

Technical specifications spud legs

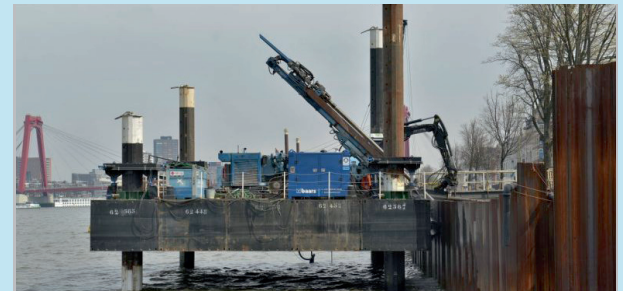
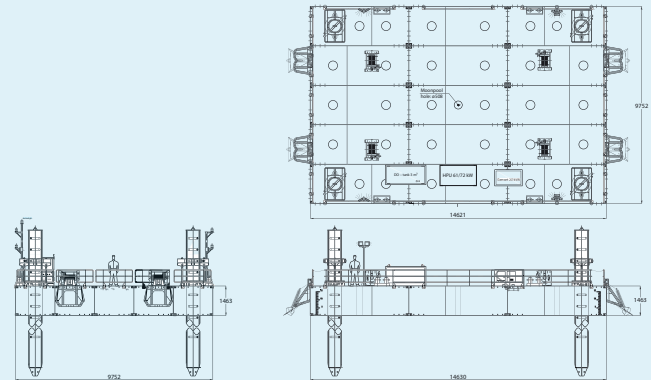
Number	4
Length	30 m
Breadth (length)	762 mm

Classification

Class society	RINA certified coastal area
Class notation	✳ HULL 5 NM
	Off shore self-elevating unit
	Special service construction unit
	Coastal area 20 miles from shore HS < 2.50 m

Options

Generator
Dragline mats/Fenders
Accommodation unit
Working Lights/Life saving equipment
Waste/Water/Fuel tank
Storage container/Moonpool
Propulsion



Marine equipment



Fender



Toolbox containers



Hydraulic hoses



Remote control



Lifting table spud leg