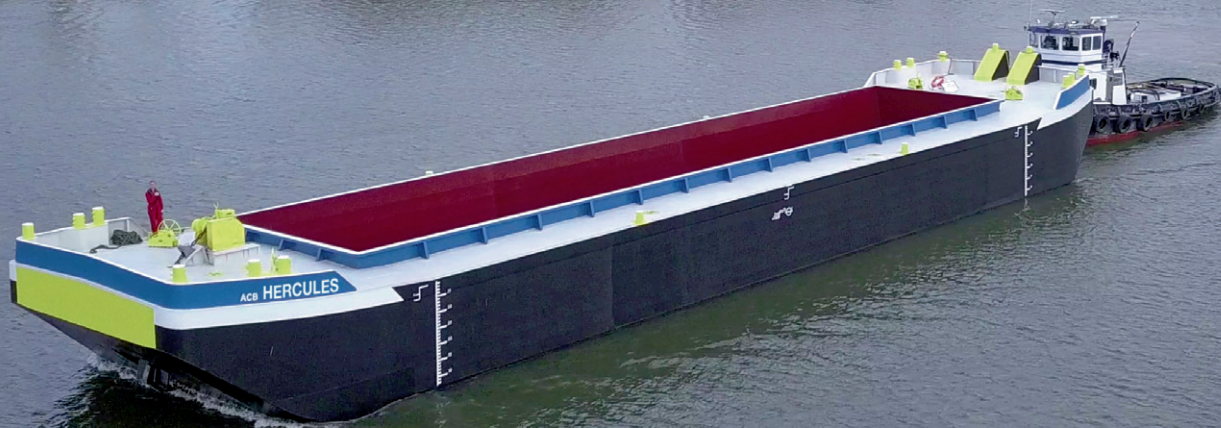


CUSTOM MADE HOPPER BARGES



Main Specifications

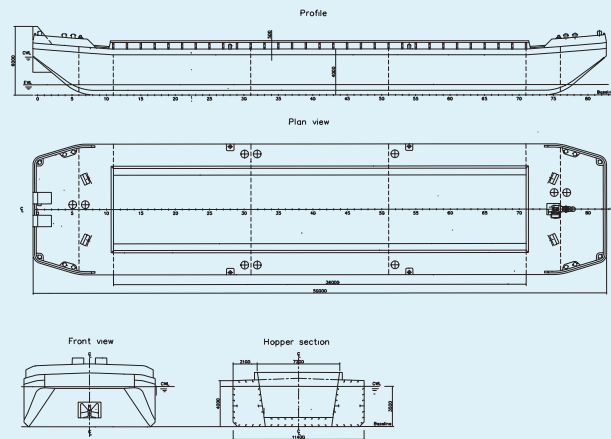
Length over all	54.84 m
Breadth over all	11.40 m
Depth	4.00 m
Seagoing draught loaded	2.97 m
Seagoing dredging freeboard	1.03 m
Seagoing loading capacity	1415 tonnes
Inland air draught for Zone 2 (PLA cat C)	1.03 m
Inland dredging freeboard for Zone 2 (PLA cat C)	0.33 m
Inland loading capacity for Zone 2 (PLA cat C)	1864 tonnes
Air draught (above lightship draught)	5.42 m

Hopper hold

Volume	1050 m ³
Length	40.80 m
Breadth on coaming	7.2 m

Particulars

Hopper Barge no.	B1003, B1004 built in 2018
Seagoing Classification	Rina C ✕Hull Barge; coastal area
Inland Classification	NSI (CVO/CBB) Zone 2 (NL), 3, 4 + Rhine
Weight	300 tonnes



Main Specifications Base (for a 881 m3 hopper barge)

Length over all	7.60 m
Breadth over all	4.38 m
Depth over all	3.12 m

Extension (for a 881 m3 hopper barge)

Length over all	7.60 m
Breadth over all	2.72 m
Depth over all	4.00 m

Particulars

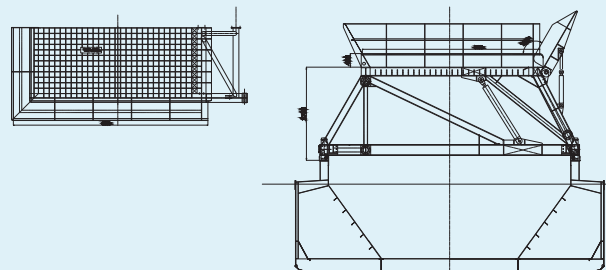
Manipulated by cylinders

Powered by additional powerpack

Remotely controlled

Synchronised ramp with elevating platform

Can be executed for all types of hopper barges



Hopper Barge with crane platform

[contact opnemen](#) >

Main Specifications

Length over all	7.17 m
Breadth over all	7.98 m
Depth over all	2.03 m
Weight	24.7 tonnes
Capacity	100 tonnes
Length of rail (according cargo in B51)	28 m

Particulars

Construction driven by rollers
Can be executed for all types of hopper barges

