

Modular Jack-up 6'

Main Specifications

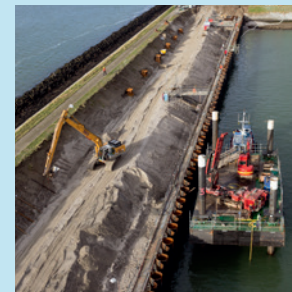
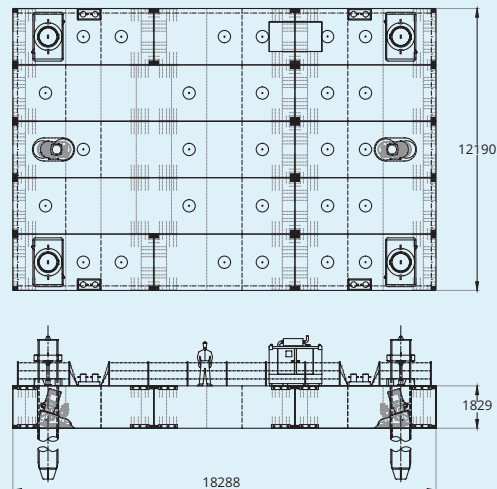
Length	18.29 m
Breadth	12.19 m
Depth	1.83 m
Deck load	6 tonnes/m ²
Spud legs Ø 762 mm, 12 – 24m (alternative lengths on request)	4 pcs

Specifications

Hydraulic system	2 cylinders (each spud)
Jacking capacity	50 tonnes (each spud)
HPU	John Deere, 62 kW, 250 bar working pressure, 120 ltr/min flow, remote controlled
Jacking system	Manually operated (pins)
Payload	50 tonnes
Optional	assisted propulsion

Classification

Class society	DNV-GL or Bureau Veritas
Class notation	Inland waters, sheltered area, coastal area



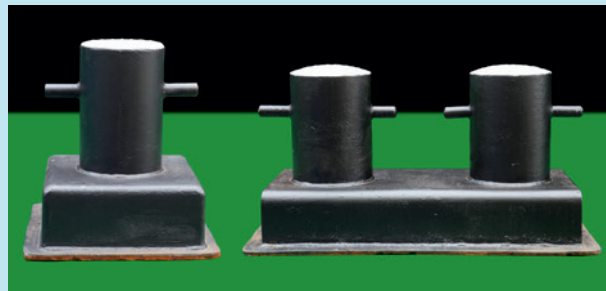
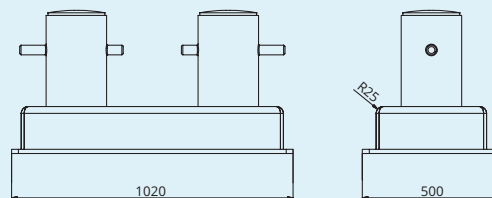
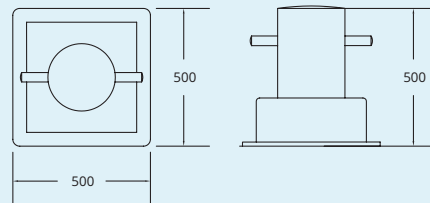
Single and Double Bollard Chest

Technical information Single bollard

Length	500 mm
Breadth	500 mm
Depth	500 mm
Total weight	80 kg

Technical information Double bollard

Length	1.020 mm
Breadth	500 mm
Depth	500 mm
Total weight	160 kg



Marine equipment



Fender



Toolbox containers



Hydraulic hoses



Remote control



Lifting table spud leg