

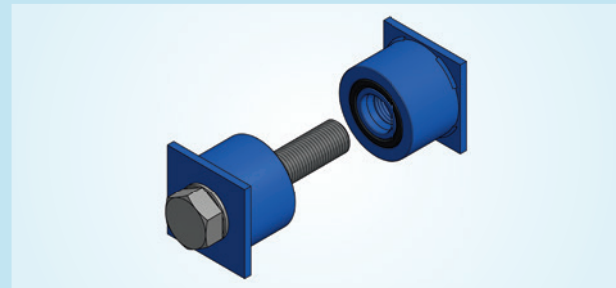
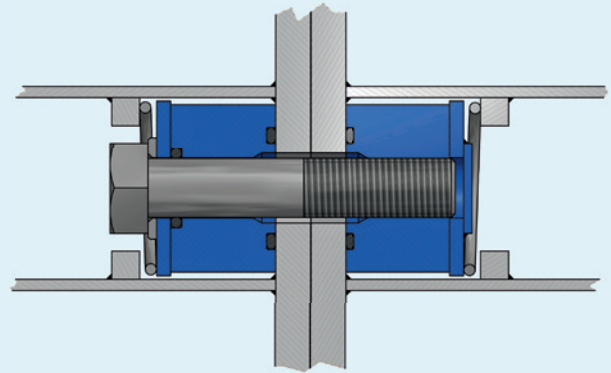
Coupling 9,5' Container M42

Main Specifications

Pre-tensioning	737 kN, (10kN = 1 tonnes)
Certification	Approved by Bureau Veritas.

Description

The M42 Coupling system is specially designed for modular seagoing equipment. Following the successful path of the original Confloat Coupling, the M42 Coupling meets the demand for heavier equipment by providing higher strength capabilities. Just like it's smaller sibling the M42 Confloat Coupling System comprises separate components that are mounted in the pontoons prior to the assembly. The coupling forms a "Bolt & Nut" connection, consisting of a high-grade bolt, a guide sleeve for the bolt and a nut. Based on a predefined configuration both the Male and Female components are mounted in the containers, so they will be at opposite positions during assembly. Each high cube 40 ft container-side contains twenty-four (24) coupling positions, while it's 20 ft equivalent contains twelve (12) coupling positions. Both 20'-and 40' containers have eight (8) coupling positions at the front-/backside. After those preparations on shore the pontoon will be assembled. As soon as the bolts are aligned to the corresponding nuts they will be immediately tightened by using an impact wrench. After all containers are assembled, each bolt will be pre-tensioned by means of a pneumatic torque wrench set to a preload of 737 kN. This method creates a shock-proof and virtually seamless assembly that can absorb high dynamic loads.



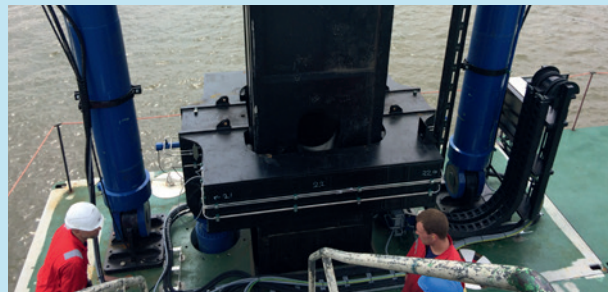
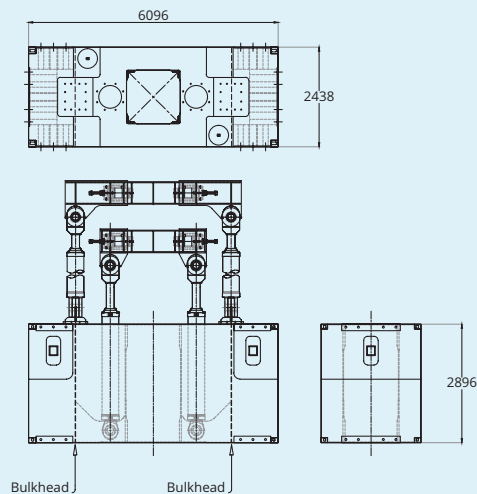
Modular Pontoon 9.5' - 20' Hydraulic Spud

Main Specifications

Length	6.10 m (20')
Breadth	2.44 m (8')
Depth	2.90 m (9.5')
Deck load	12 tonnes/m ²
Number of water-tight compartments	3
Weight (container only)	19,810 kg

Classification

Class society	DNV-GL or Bureau Veritas
Class notation	Inland waters, sheltered area, coastal area



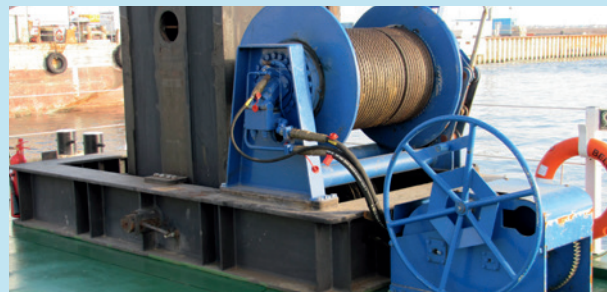
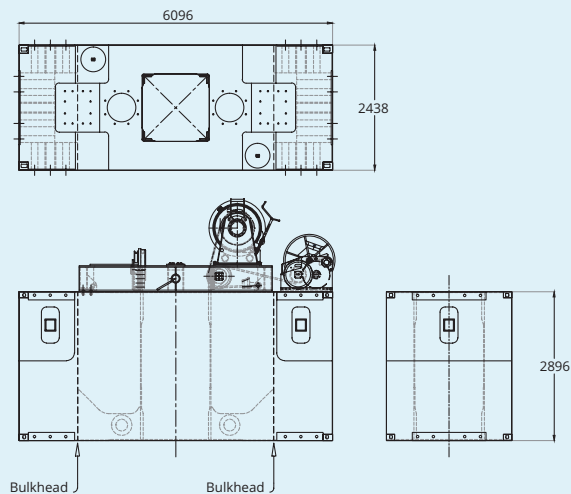
Modular Pontoon 9.5' - 20' Wire Spud

Main Specifications

Length	6.10 m (20')
Breadth	2.44 m (8')
Depth	2.90 m (9.5')
Deck load	12 tonnes/m ²
Number of water-tight compartments	3
Weight (container only)	19.810 kg

Classification

Class society	DNV-GL or Bureau Veritas
Class notation	Inland waters, sheltered area, coastal area



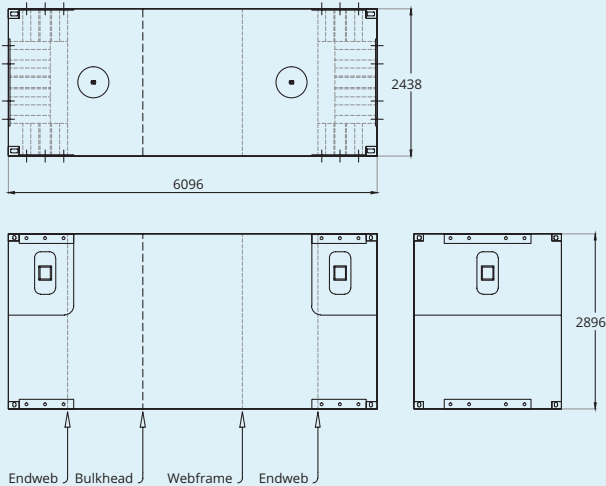
Modular Pontoon 9.5' - 20' Standard

Main Specifications

Length	6.10 m (20')
Breadth	2.44 m (8')
Depth	2.90 m (9.5')
Deck load	12 tonnes/m ²
Number of water-tight compartments	2
Weight	10.835 kg

Classification

Class society	DNV-GL or Bureau Veritas
Class notation	Inland waters, sheltered area, coastal area



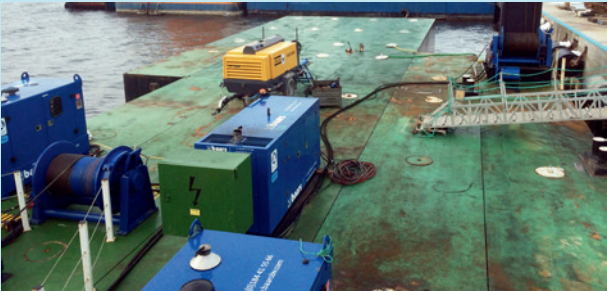
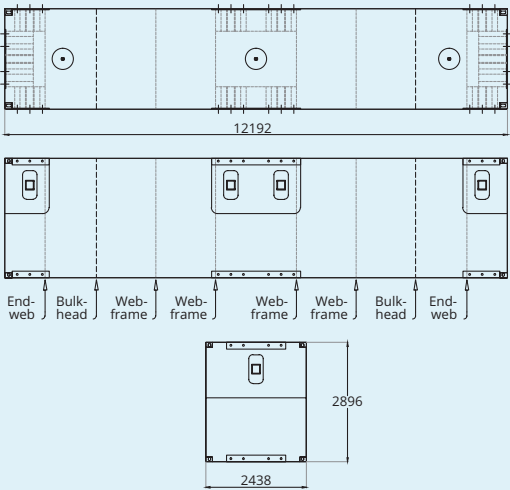
Modular Pontoon 9.5' - 40' Standard

Main Specifications

Length	12.19 m (40')
Breadth	2.44 m (8')
Depth	2.90 m (9.5')
Deck load	12 tonnes/m ²
Number of water-tight compartments	3
Weight	19.060 kg

Classification

Class society	DNV-GL or Bureau Veritas
Class notation	Inland waters, sheltered area, coastal area



Beluga

Main Specifications

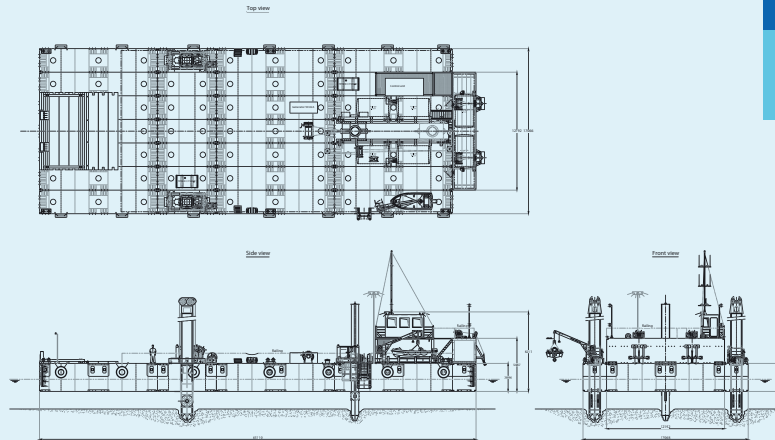
Length	45,11 m
Breadth	17,07 m
Depth	2,90 m
Loading capacity	700 tonnes

The Modular Container Pontoon consists of:

- 10 pcs 40' Confloat Containers Pontoons
- 2 pcs 20' Confloat Container Pontoons
- 2 pcs 20' Confloat Container with spud
- 1 pc 40' Confloat Container with storage
- 2 pcs Hammerhead spud legs 1.200 x 1.200 x 18.000 mm
- 1 pc Walking spud leg Ø 760 x 18.000 mm
- 1 pc Control unit incl. lightmasts
- 1 pc Accomodation unit
- 2 pcs Hydraulic single drum spud leg winch 18 tonnes capacity
- 2 pcs Hydraulic single drum anchor winch 7 tonnes capacity
- 2 pcs Hand operated single drum winch 40 tonnes
- 1 pc Diesel driven hydraulic power pack remote controlled
- 1 pc 50 kVA Generator and 2 pcs Excavator blocks
- 6 pcs Wooden matrasses and 6 pcs Double bollards
- 16 pcs Fenders and Solas equipment

Excavator Caterpillar 395

Weight	120 tonnes
Dredging depth	10 m
Bucket size	6 m ³



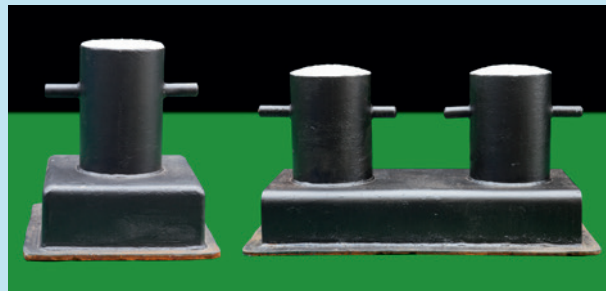
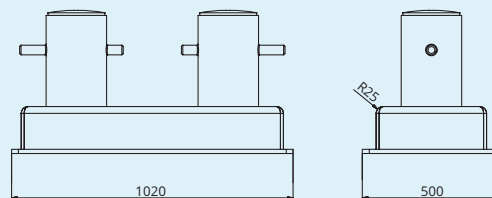
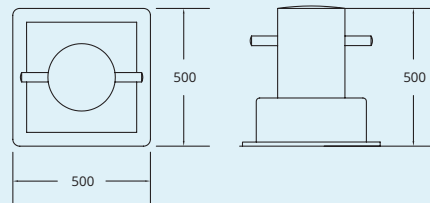
Single and Double Bollard Chest

Technical information Single bollard

Length	500 mm
Breadth	500 mm
Depth	500 mm
Total weight	80 kg

Technical information Double bollard

Length	1.020 mm
Breadth	500 mm
Depth	500 mm
Total weight	160 kg



Marine equipment



Fender



Toolbox containers



Hydraulic hoses



Remote control



Lifting table spud leg