

Drywell Hopper Barge 240 m³

Main Specifications

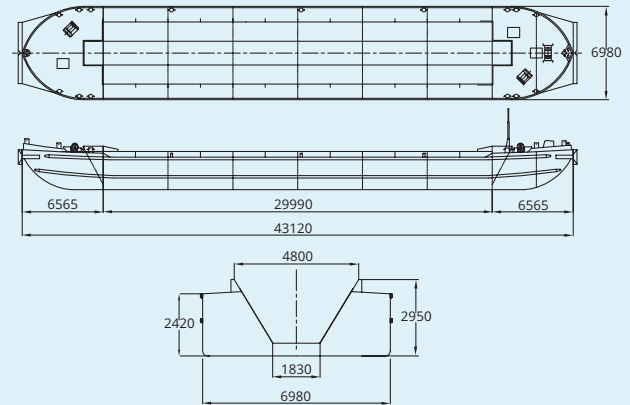
Length over all	43.12 m
Breadth over all	6.98 m
Depth	2.42 m
Free board	0.14 m
Air draught	3.50 m
Draught unloaded	0.59 m
Draught loaded	2.28 m
Loading capacity	490 tonnes

Hopper hold

Volume	240 m ³
Length	29.99 m
Breadth on coaming	4.80 m
Breadth on floor	1.83 m
Wear plates	13 mm

Particulars

Drywell Hopper Barge no.	B63, B64 (2 no.)
Built	1963 / adjusted 1991
Inland classification	NSI (CvO/CBB)
	Zone 2 (NL), 3, 4 + Rhine
Weight	150 tonnes



Drywell Hopper Barge 250 m³

Main Specifications

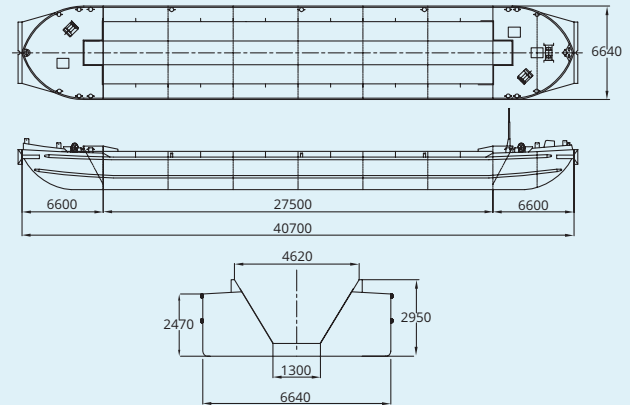
Length over all	40.70 m
Breadth over all	6.64 m
Depth	2.47 m
Free board	0.04 m
Air draught	3.74 m
Draught unloaded	0.55 m
Draught loaded	2.43 m
Loading capacity	461 tonnes

Hopper hold

Volume	250 m ³
Length	27.50 m
Breadth on coaming	4.62 m
Breadth on floor	1.30 m
Wear plates	12 mm

Particulars

Drywell Hopper Barge no.	B46, B47 (2 no.)
Built	1964 / adjusted 1989
Inland classification	NSI (CvO/CBB)
	Zone 2 (NL), 3, 4 + Rhine
Weight	124 tonnes



Drywell Hopper Barge 300 m³

Main Specifications

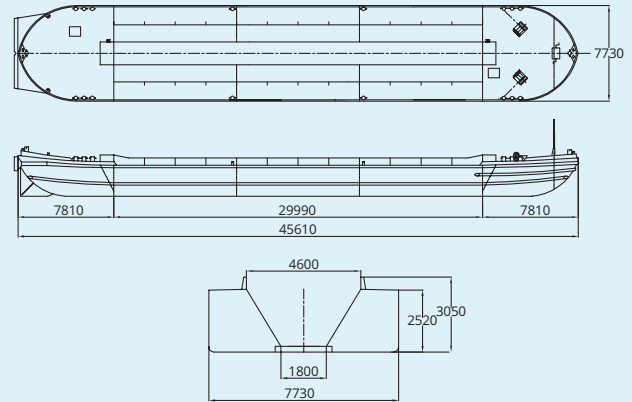
Length over all	45.61 m
Breadth over all	7.73 m
Depth	2.52 m
Free board	0.11 m
Air draught	4.10 m
Draught unloaded	0.57 m
Draught loaded	2.41 m
Loading capacity	566 tonnes

Hopper hold

Volume	300 m ³
Length	29.99 m
Breadth on coaming	4.60 m
Breadth on floor	1.80 m
Wear plates	13 mm

Particulars

Drywell Hopper Barge no.	B31
Built	1966
Inland classification	NSI (CvO/CBB)
	Zone 2 (NL), 3, 4 + Rhine
Weight	160 tonnes



Drywell Hopper Barge 425 m³

Main Specifications

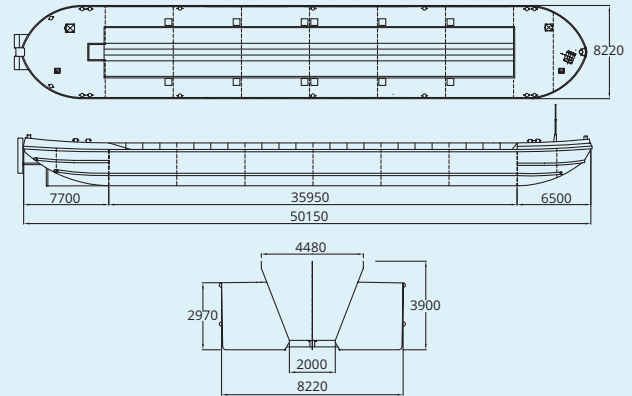
Length over all	50.15 m
Breadth over all	8.22 m
Depth	2.97 m
Free board	0.17 m
Air draught	4.20 m
Draught unloaded	0.61 m
Draught loaded	2.80 m
Loading capacity	817 tonnes

Hopper hold

Volume	425 m ³
Length	35.95 m
Breadth on coaming	4.48 m
Breadth on floor	2.00 m
Wear plates	16 mm

Particulars

Drywell Hopper Barge no.	B45
Built	1962 / adjusted 1988
Inland classification	NSI (CvO/CBB)
	Zone 2 (NL), 3, 4 + Rhine
Weight	210 tonnes



Drywell Hopper Barge 475 m³

Main Specifications

Length over all	55.92 m
Breadth over all	8.19 m
Depth	3.22 m
Free board	0.10 m
Air draught	4.80 m
Draught unloaded	0.71 m
Draught loaded	3.12 m
Loading capacity	993 tonnes

Hopper hold

Volume	475 m ³
Length	38.89 m
Breadth on coaming	5.08 m
Breadth on floor	1.92 m
Wear plates	13 mm

Particulars

Drywell Hopper Barge no.	B48
Built	1972 / adjusted 1998
Inland classification	NSI (CvO/CBB)
	Zone 2 (NL), 3, 4 + Rhine
Weight	275 tonnes

