



## DIMENSIONS

**L** 14.63 M

**W** 7.32 M

**D** 1.83 M

## Main Specifications

Length	14.63 m
Width	7.32 m
Min draft	1.00 m
Max draft	1.50 m
Airdraft	4.50 m
Max view height	4.50 m
Bollard Pull	6 tonnes
Speed	7 knots
Fuel oil	12 m <sup>3</sup>
Freshwater	10 m <sup>3</sup>
Lub oil	1 m <sup>3</sup>
Hydraulic oil	1 m <sup>3</sup>



### Propulsion system

Main Engines	John Deere 300 HP including CCR 2 certificate
Cylinders	6 in line
RPM	2300 rpm/min
Total Power	2 pcs approx. 300 HP
Gear boxes	2 x twin disc MG5050SC
Reduction	3.38:1
Propulsions	2 x Cunial propeller / 680 rpm
Diameter	2 x 780 mm
Wheelhouse equipment	VHF Maritime Radio Telephone, Navigation lights

### Multi pontoon consist out of the following Confloat Containers

2 side pontoons	40' 19 tonnes each including engines
1 middle pontoon	40' 12 tonnes
1 bow pontoon	24' 7 tonnes
Steering wheelhouse	3 tonnes
Miscellaneous	4 tonnes

### Auxiliary equipment

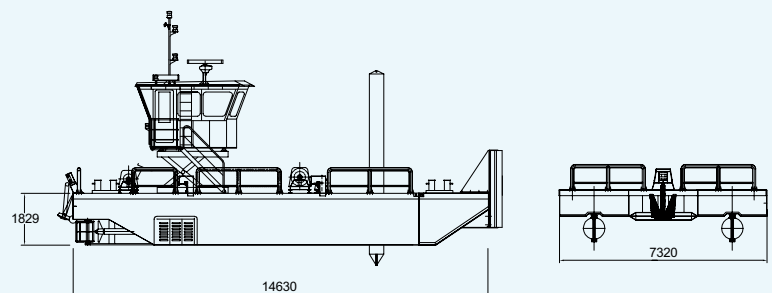
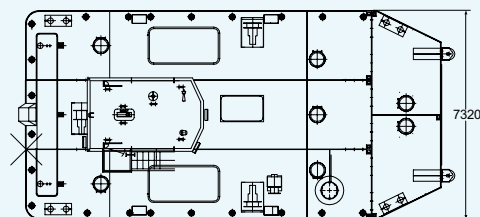
Palfinger Marine fully hydraulic foldable knuckle boom crane  
total outreach 12,4 meter / SWL 1.550 kg

### Deck Layout

- 1 anchor handling
- 1 spudleg 10.000 x Ø508 mm operated by hydraulic winch

### Nautical and Communication equipment

VHF Maritime Radio  
Navigation lights  
Class GL ✕ 100 A5 RSA (20)



### Visiting address

Rivierdijk 276, 3361 AV Sliedrecht  
The Netherlands

### Postal address

P.O. Box 70, 3360 AB Sliedrecht  
The Netherlands

**T** +31 184 41 55 66

**E** rental@baarsbv.com

**I** www.baarsbv.com